

Technical rider Theater am Gleis V2/24 en

1 Hall

The Hall is divided into the stage and the audience area. Walls and floor are painted black.

1.1 Audience area

The audience sits on chairs on a wooden audience stand. The stand is permanently built in and cannot be removed. The audience stand consists of seven steps. There are 14 chairs per row. The first step of the audience stand is 0.17m high, second to sixth 0.34m, the 7th 0.5m by a depth of about 0.8m. There is an additional row with 12 seats at the very top in the back. The overall dimensions of the audience stand including the stairs on the left side are 10.15m width by about 2.5m height. It is possible to put another row of 14 chairs in front of the audience stand at zero level.

Audience capacity

98 to 124pax max

1.2 Stage

Stage dimensions

Width: 10m. On the right side in the last third the width is reduced by 0.7m by a large box

Depth: 7m

Height: 0.1m

Stage clearance height: 4.5m up to the truss pipes

Stage access

The stage can be accessed in three ways

- from the front side visible from the audience area
- from the foyer through a small door on the rear left side
- from the deck in front of the theater through the door at the back of the stage

Door dimensions

Main entrance door

Width: 1,2m

Height: 2.15m

Back door:

Width: 1.2m

Height: 2.15m

Side door:
Width: 0.75m
Height: 2m

Load in

Via small stairs across the deck either through the foyer into the hall or through the back door directly onto the stage
Heavy material can be by lifted onto the deck with an external service lift located about 50m down the street

Rigging points

There are nine (9) permanently installed steel pipes at 4.5m height spanning the width of the room. Five (5) over the stage, two (2) between the stage and the audience stand and three (3) over the audience area. All pipes are equipped with 9 power outlets which can be patched to dimmers at the hard patch panel.

Power

Power is accessible at all three sides of the stage; those are 230V/10A swiss T13 outlets. Please bring adapters or power converter as needed. 'Euro-plug' (EN 50075 Typ C CEE 7/16) does fit

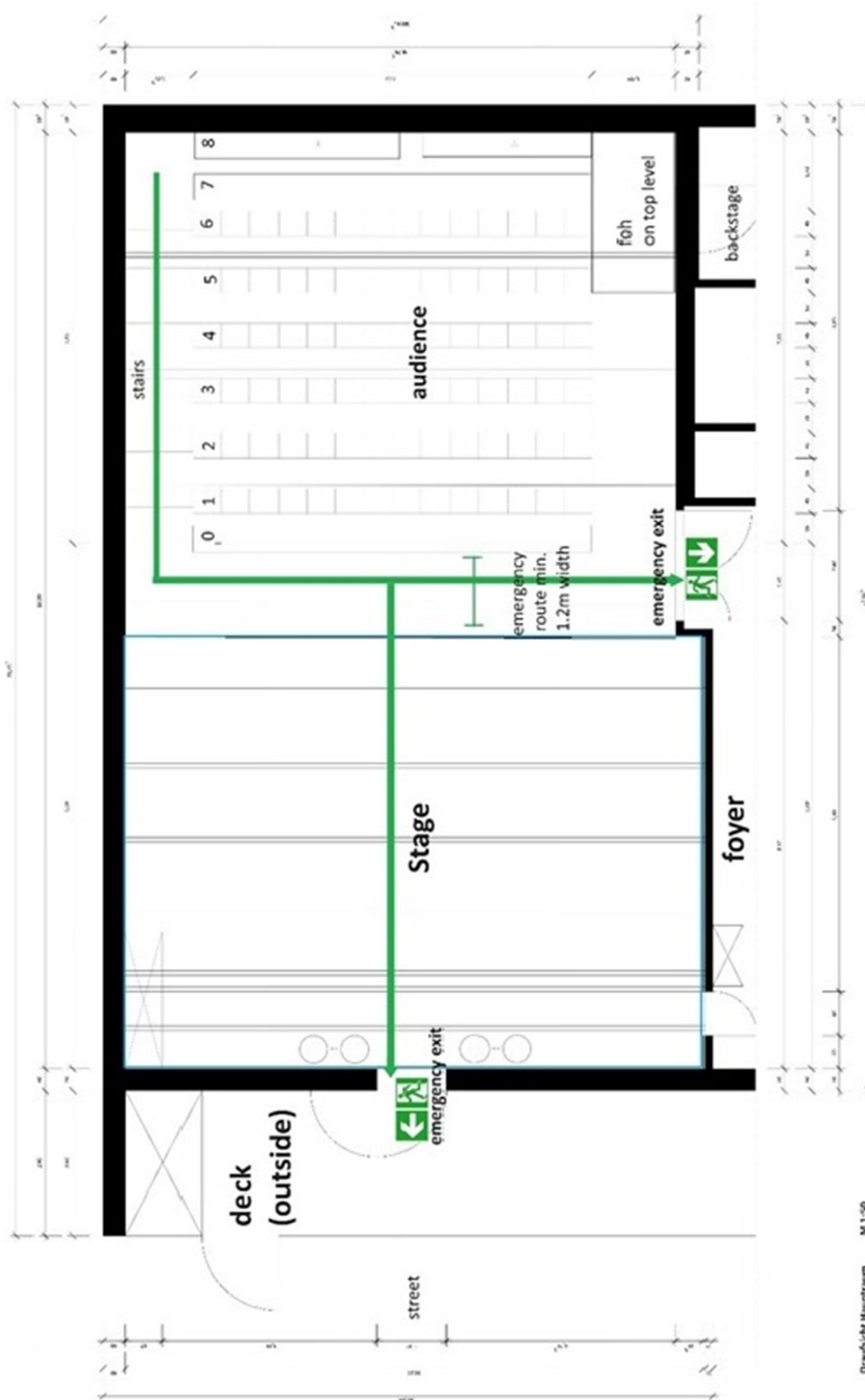
Curtains/wall hangings

All three sides of the stage are covered with black curtains. These curtains can be moved around on curtain rails, but cannot be removed.

1.3 Front of house

The foh is placed at the side at the very top of the audience stand. Light and sound desk are placed next to each other.

1.4 Floorplan theater hall



2 Technical equipment

2.1 Light

*There is no basic lighting set up. The actual set up depends on the previous one.
Most of the times pre-hanging is not possible.*

Lighting desk

Chamsys MQ 50

Dimmers

3x Zero 88 Spice, twelve (12) channel dimmer at 32A each

Lights

3x Profiler ETC S4 Zoom 15-30°
3x Profiler ETC S4 zoom 25-50°
9x Profiler ETC S4 Junior Zoom 25-50°
8x Fresnel Strand 1kW
7x Fresnel Arri Plus 650W
4x PC Robert & Juliet 306 HPL 1kW
3x PC Robert & Juliet 310 HPL 1,2 kW
3x PC Alto 1kW
6x PAR ETC S4
6x PAR 64 CP62 1kW
3x Fluter symmetrical 500W
1x Fluter symmetrical 1kW
4x Movinglight JB Lighting P7 CMY

Misc

1x Hazer
1x LLT Sm228, DMX Merger/Splitter 2 in, 8 out. One half is three (3) pin, the other half is five (5) pin
6x wooden base plate
6x 'Gassenstände' (light stands with fixed height, about 1.6m high)

Filters

We only have standard filters like frost or Lee 201, please bring anything else. We do have a small collection of different colors, but amounts and sizes are always changing

For most of the lights doors/shutters and filter frames are available

Connections foh to stage

4x DMX via Cat7

2.2 Projection

Projector

Epson EB-L730U

Connection

HDMI

Front Projection screen, on legs

AV StumpflVario 32

Format

16:9

Screen measurments

3.65m x 2.10 m

Picture measurements

3.55 x 2.00 m

plus 5 cm black edge

Connections

1x HDMI foh to fronttruss center

1x HDMI stage to frontruss center

2.3 Sound

The PA tops are flown from the truss pipes and cannot be moved

One sub per side on the stage

Mixing desk

Allen & Heath SQ5

Stagebox

Allen & Heath AR2412 Stagebox

PA

2x Kling & Freitag CA1201-M Top flown

2x Kling & Freitag SW112 Sub

Opt. PA

2x EV selfpowered (12"/1,4") with stands

Monitor wedges

4x Kling & Freitag CA106

Mikrophones

1x Sennheiser e902

4x Sennheiser e904

2x Sennheiser e906

5x Sennheiser e935

1x Shure Beta58

1x Neumann KMS 105

2x Rhode NT5

2x Neumann KM 184

1x Shure SM 57

Stands

5x K&M large with boom

5x K&M small with boom

Misc

2x Mono DI Box

2x Stereo DI Box

XLR cables 5m / 8m / 10m

XLR Subcore 12/0, 10m

Speakon cables 5m / 10m / 15m

1x 30m Belden cat 5e

Connections foh to stage

1x Cat7 digital multicore for stage box Allen&Heath AR2412

Staging

10x Nivtec platform 2x1m

3x Nivtec platform 1,5x0,5m

4x legs 100cm - 140cm

4x legs 60cm - 90cm

6x legs 40cm

8x legs 20cm

4x legs vario max 20cm

We assume compliance with valid and common safety regulations. Theater am Gleis cannot be held liable for any violation of these regulations.

Contact

Sound + coordination:
Alexandra Kamel

Mail:
technik@theater-am-gleis.ch

Lights + Haustechnik:
Daniele Brumana